

NPI (5kHz~15kHz)

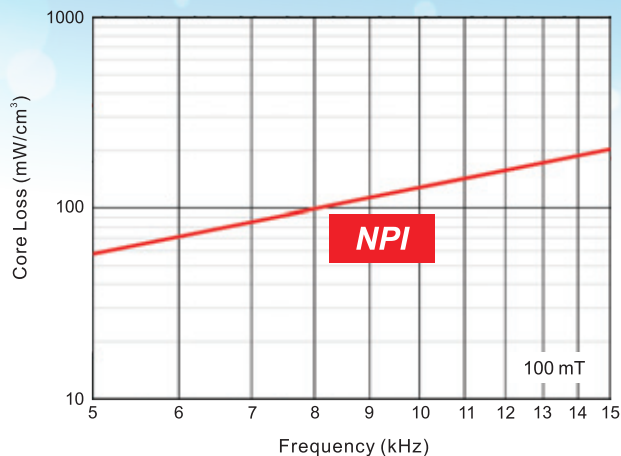
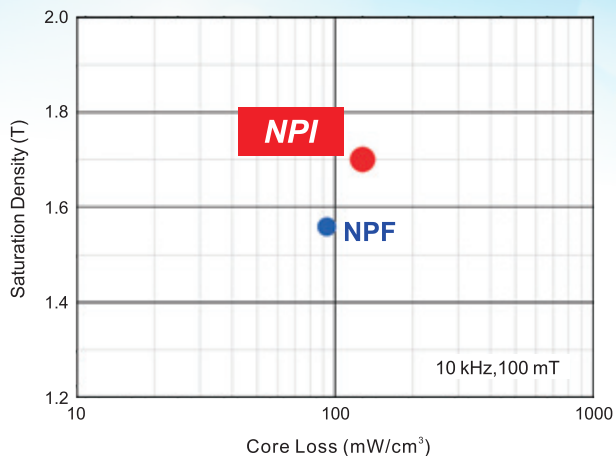
适用于大功率器件的金属粉芯

Powder core suitable for high power density device

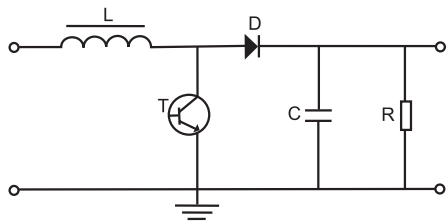


产品性能比较

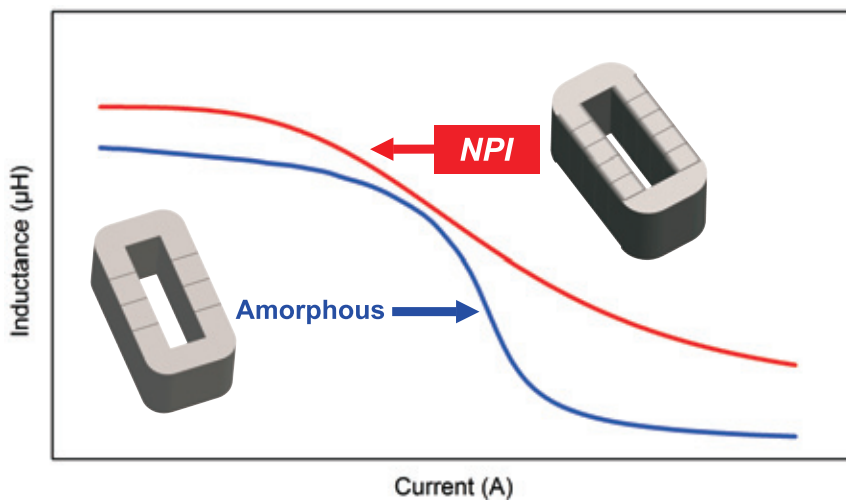
Comparison of Characteristics



案例 Case



频率 f	10 kHz
功率 P	40 kW
额定电流 I	125 A
磁芯 Core	方块 Block



基本信息

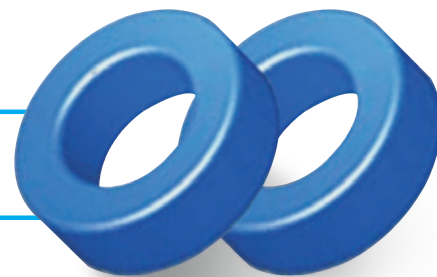
Basic information

磁导率 Permeability (μ)

90

形状 Appearance

方块 Block



* 备注：所有性能参数均由铂科测试平台提供。Notes: All data are provided by POCO testing platforms.